



**Shaw  
& Co**  
ESTATE  
AGENTS

**£364,950**

**Guernsey Close**

Hounslow, TW5 0PQ

**Shaw & Co**  
ESTATE AGENTS



## PROPERTY SUMMARY

A two bedroom first floor maisonette nestled on this quiet residential cul de sac, well presented throughout and benefitting from a private garden. Perfect for first time buyers, the property has a spacious lounge, separate kitchen area, two good size bedrooms and a three piece bathroom suite. Further features include a garage, walking distance to local schools, shops and bus stops.

2



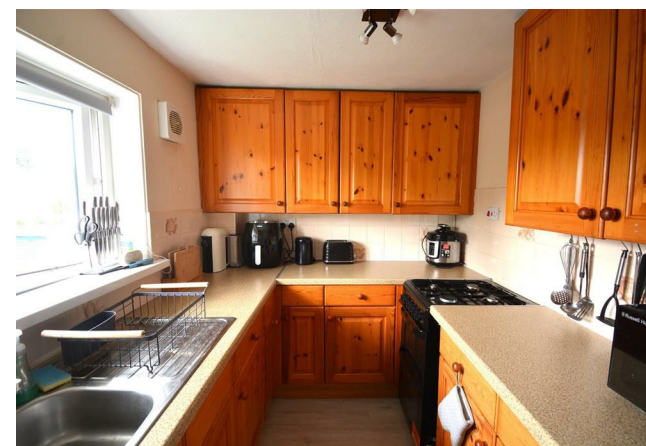
1



1



Shaw & Co  
ESTATE AGENTS

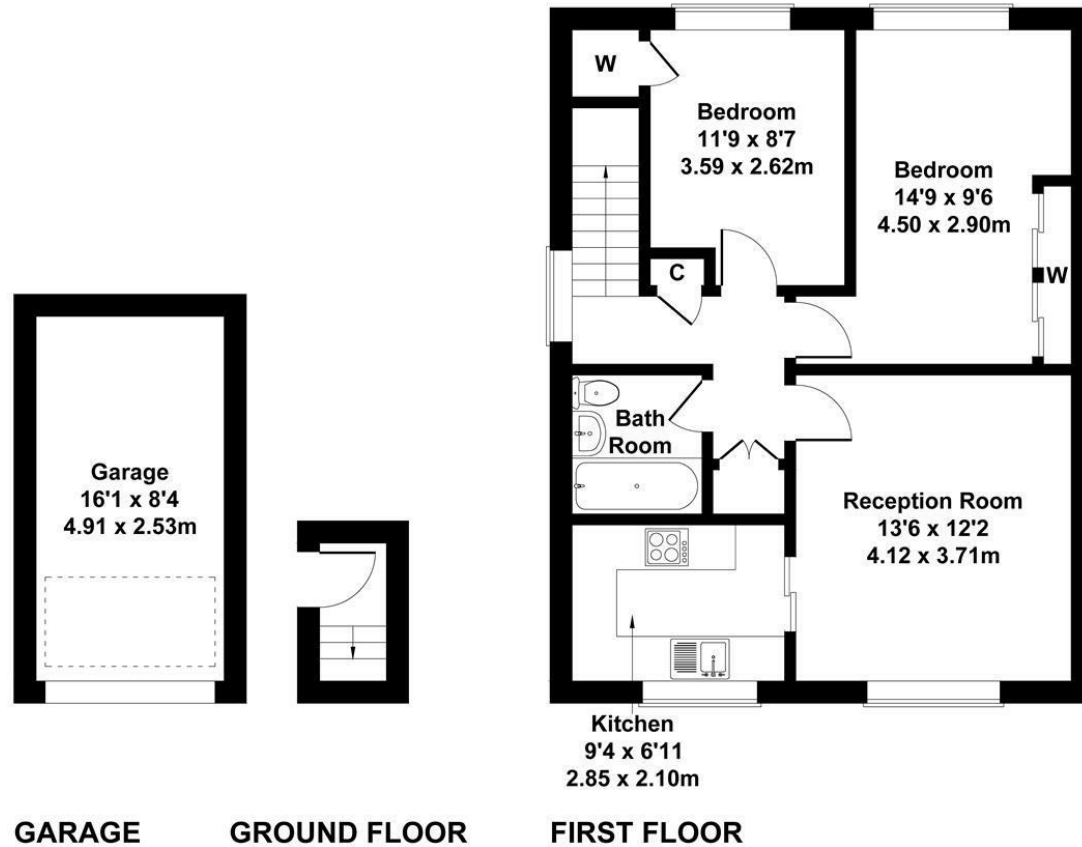






# Guernsey Close, Heston

Approximate Gross Internal Area  
786 sq ft - 73 sq m  
(Excluding Ground Floor)



Not to Scale. Produced by The Plan Portal 2023  
For Illustrative Purposes Only.

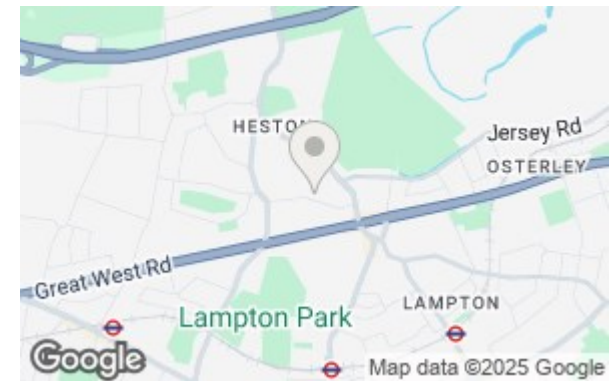
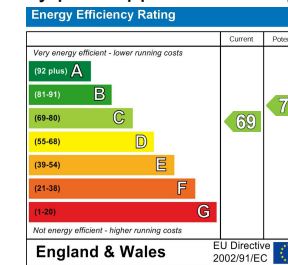
**Shaw & Co**  
ESTATE AGENTS

**LOCAL AUTHORITY**  
Hounslow London Borough Council

**TENURE**  
Leasehold

**COUNCIL TAX BAND**  
C

**VIEWINGS**  
By prior appointment only



Agents Note: Whilst every care has been taken to prepare these particulars, they are for guidance purposes only. All measurements are approximate and are for general guidance purposes only and whilst every care has been taken to ensure their accuracy, they should not be relied upon and potential buyers/tenants are advised to recheck the measurements

**Shaw & Co**  
ESTATE AGENTS

**OFFICE ADDRESS**  
10 Central Parade  
New Heston Road  
Heston  
Middlesex  
TW5 0LJ

**OFFICE DETAILS**  
0208 570 7258  
heston@shawandcoestates.com